

M2M IoT SIM Solution

Centrally manage your industrial SIM-Cards



Where are your M2M SIM-Cards today?

Have you lost overview of where your M2M SIM-cards are installed? Do you get multiple bills from multiple providers with different price plans? And do you struggle to keep track of roaming and data limits across borders?

Would you like to avoid the hassle and time consuming manual process of monitoring your SIM-cards, managing bills, risking surprisingly high invoicing for data-traffic because you do not know how much data is consumed? Are you tired of complex data plans and multiple contracts or terms & conditions? Are you dreaming of a simple tool to manage everything?

Well, your dreams have come true!

With the Secomea M2M IoT SIM-solution, everything is managed and controlled via the Secomea M2M IoT SIM-portal. The Secomea SIM-cards are working with 490 different networks in 225 countries throughout the world.

Secomea: One provider to fulfill all of your global M2M SIM-card needs. Fast and efficient, adding value to your customers or your core business!

Benefits

- **Dashboard overview**
Know exactly when and where the SIM-cards are used and their data consumption
- **Theft Protection**
Lock the SIM-card to a specific M2M device, such as a SiteManager
- **Flexible price model**
You can share the data plan across all your SIM-cards, to avoid overage charges on specific installations.

How to get started

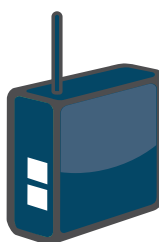
All that you need to start with your new solution is:

1. Order your SIM-cards
2. Plug it in to your Secomea sitemanagers "xx39 series" or similar IoT device.
3. Log-in to your SIM-portal with your unique login, that you will receive by email.
4. Enable your SIM-cards



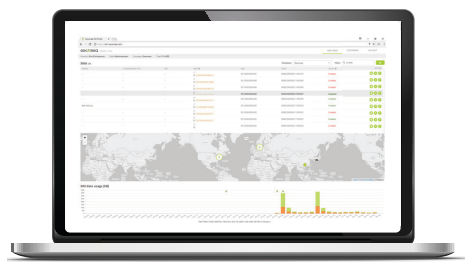
Secomea M2M IoT SIM-cards

SIM-cards that are configured to communicate directly with the Secomea M2M IoT SIM-portal



SiteManager

Any SiteManager-Hardware ending with xx39



Secomea M2M IoT SIM-portal

Login to our Secomea M2M IoT SIM-portal from where you can manage your SIM-cards.